



Leabharlann  
Náisiúnta  
na hÉireann  
National Library  
of Ireland

# National Library of Ireland

---

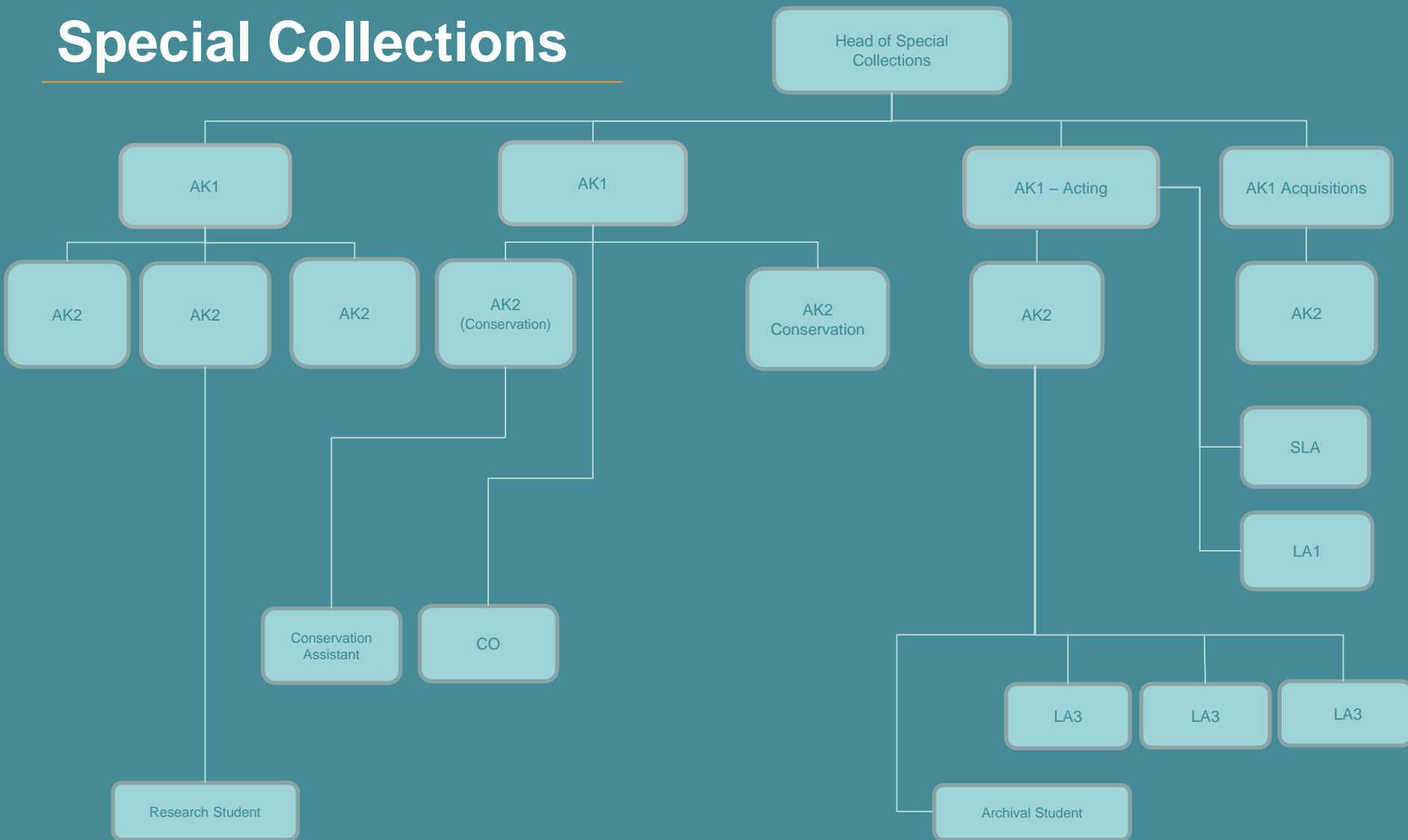
## Organisation Charts



Leabharlann  
Náisiúnta  
na hÉireann  
National Library  
of Ireland

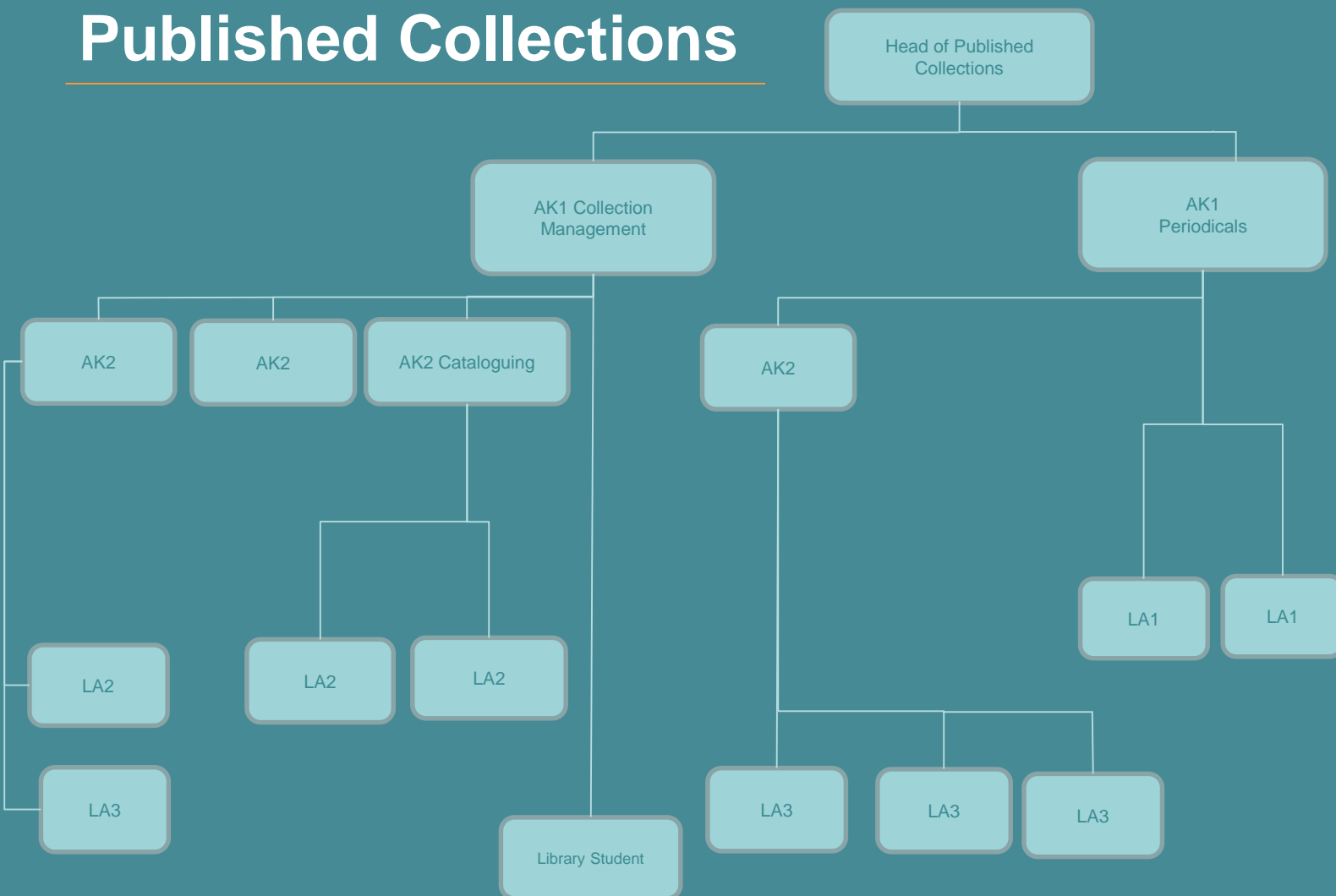
The Special Collections team is responsible for developing and managing the Library's collections of manuscripts, photographs, ephemera, maps, prints and drawings, and rare and antiquarian books from appraisal and acquisition through to newspapers from acquisition, whether through legal deposit or purchase or donation, through all collection management processes including accessioning and cataloguing. The team is also responsible for onsite access to Special Collections via the Reading Rooms in Manuscripts and the NPA and through the PD appointment system. The Library's Conservation team is part of Special Collections.

# Special Collections



The Published Collections team is responsible for developing and managing the Library's collections of books, periodicals and newspapers from acquisition through to preservation and cataloguing. Much of this collection is acquired under legal deposit. The team is also responsible for the delivery of Reading Room services in the Main Reading Room.

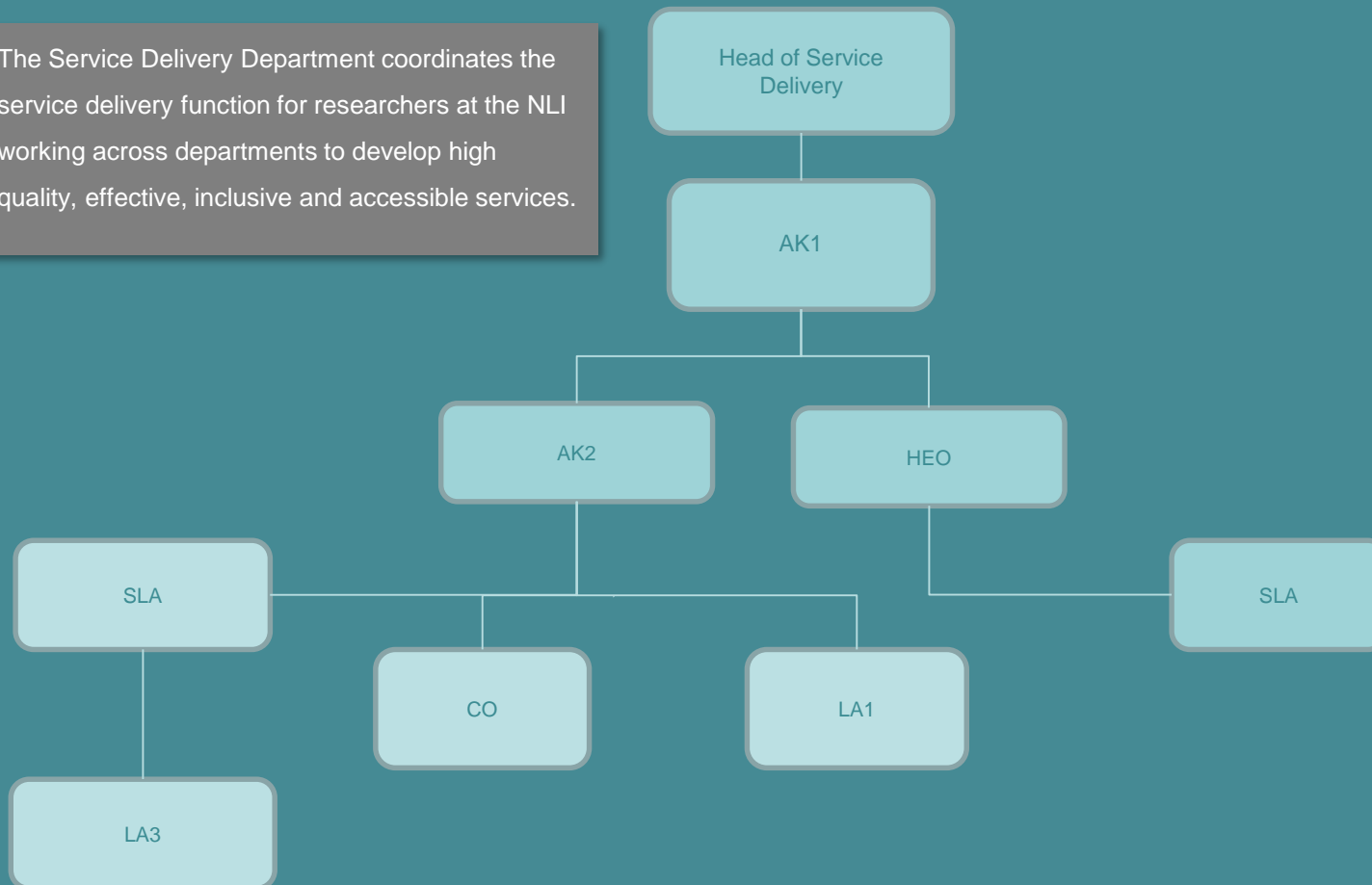
# Published Collections





# Service Delivery

The Service Delivery Department coordinates the service delivery function for researchers at the NLI working across departments to develop high quality, effective, inclusive and accessible services.



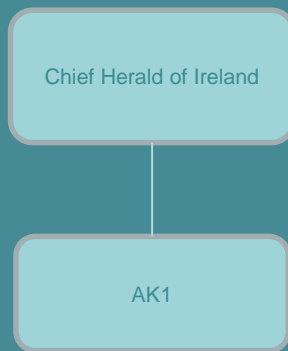


Leabharlann  
Náisiúnta  
na hÉireann  
National Library  
of Ireland

This area undertakes the heraldic functions and services of the Office of the Chief Herald.

# Office of the Chief Herald

---

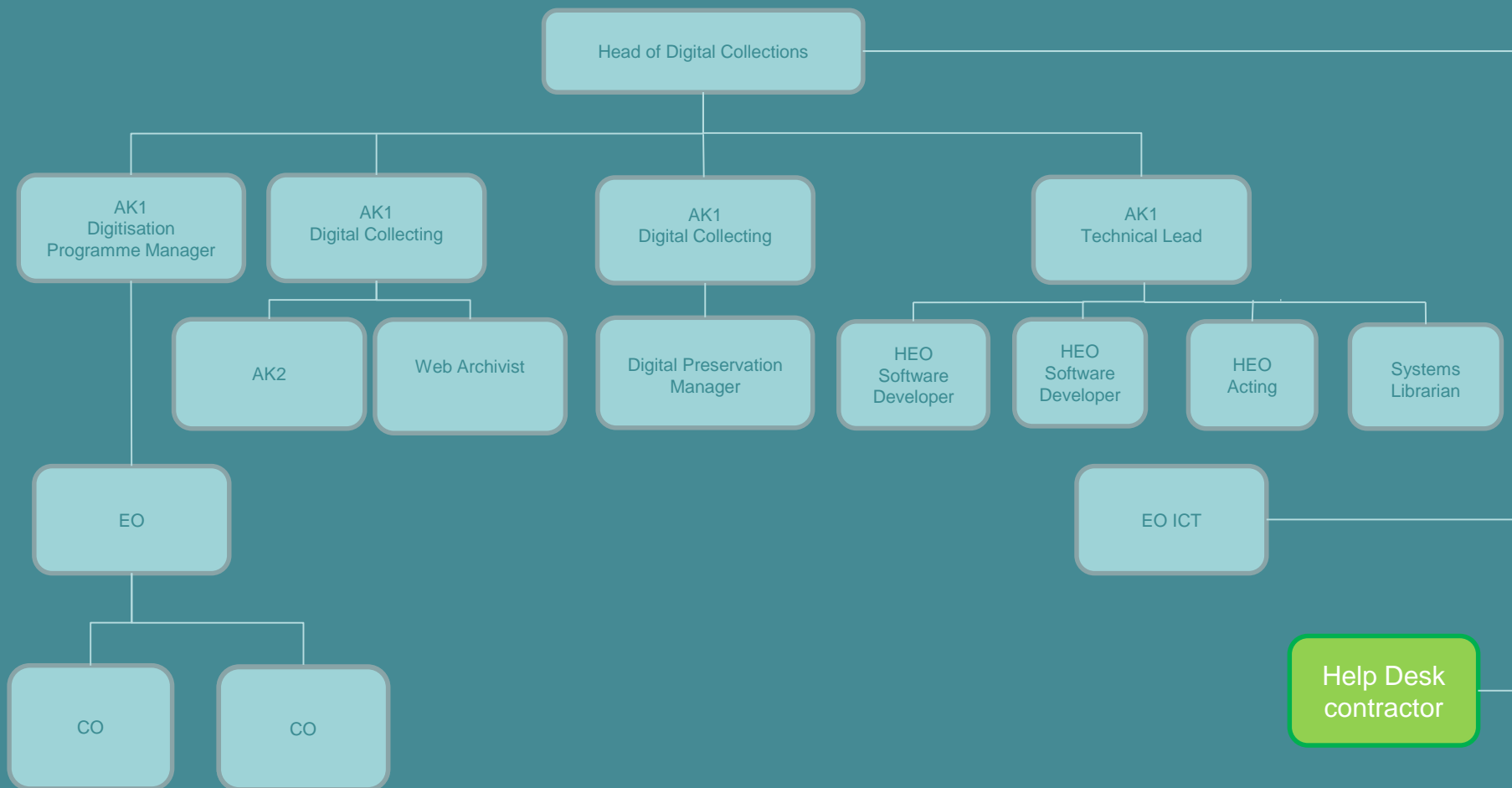




Leabharlann  
Náisiúnta  
na hÉireann  
National Library  
of Ireland

The Digital Collections team is responsible for developing, managing and preserving the NLI's digital collections, both born digital and digitised. The team is also responsible for digital systems and technical services throughout the NLI.

# Digital Collections

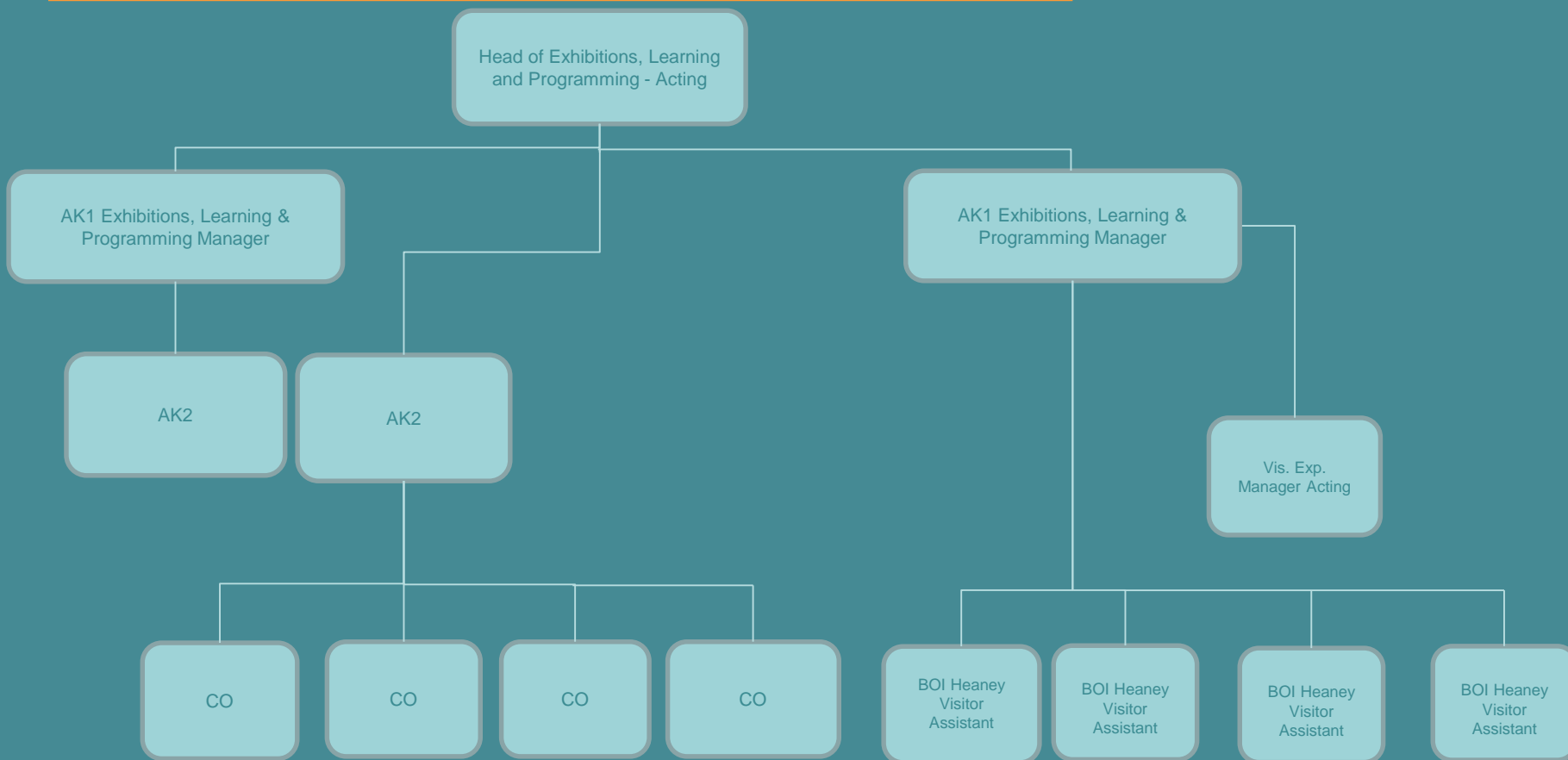




Leabharlann  
Náisiúnta  
na hÉireann  
National Library  
of Ireland

The Exhibitions, Learning and Programming team aims to engage the widest possible audience with the NLI. The team communicates the NLI's services and value, connecting us with everyone in, or interested in, Ireland.

# Exhibitions, Learning & Programming

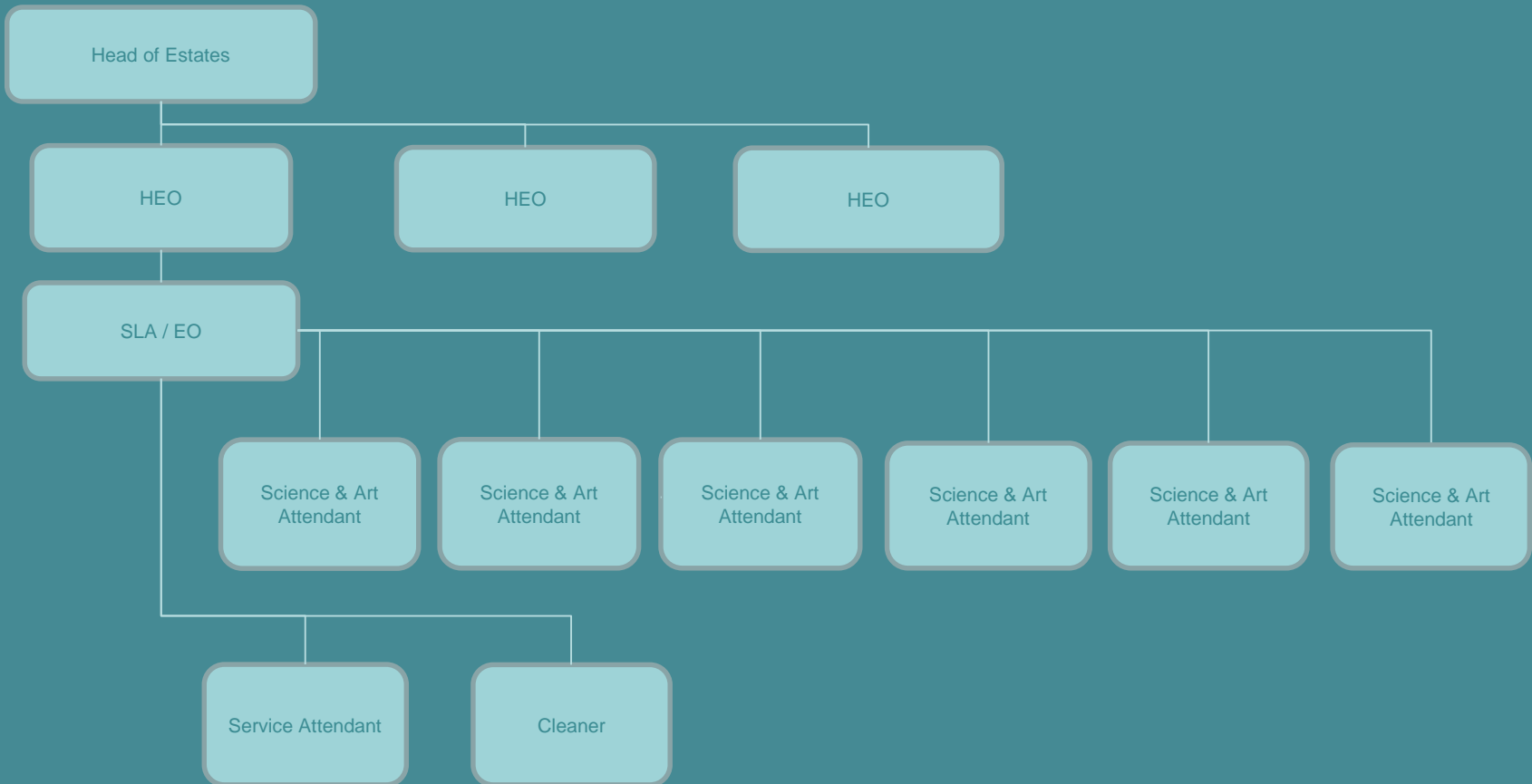




Leabharlann  
Náisiúnta  
na hÉireann  
National Library  
of Ireland

The Estates Department is responsible for the maintenance, upkeep and refurbishment of all NLI properties in conjunction with the Office of Public Works. The Estates Department manages all aspects of physical security in relation to the collections, the buildings, staff, contractors and members of the public who visit NLI premises. The responsibility for the management of Health and Safety falls under the remit of the Estates Department.

# Estates

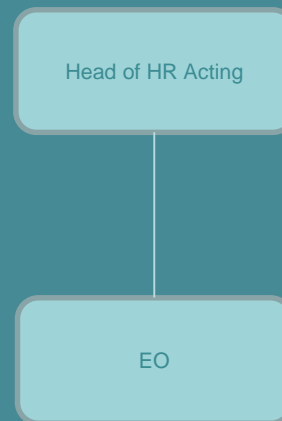




# Human Resources

The HR team is responsible for supporting all aspects of the Library's mission and strategy and includes the following functions:

- Recruitment, Selection and Promotion
- Performance Management
- Training and Organisational Development
- Culture, Equity and Communications
- Management of Shared Services

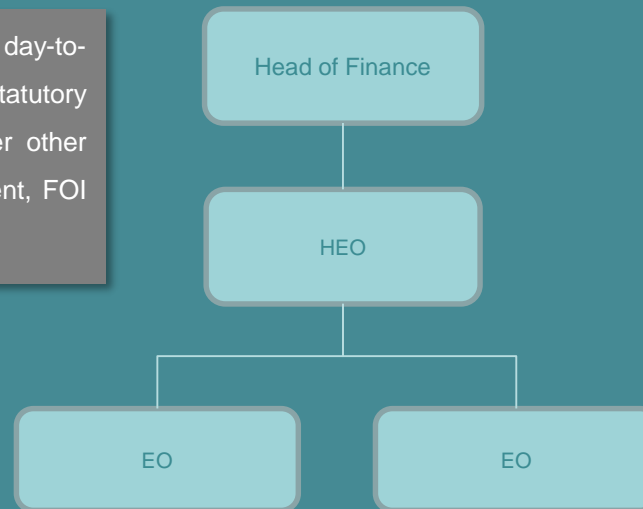




Leabharlann  
Náisiúnta  
na hÉireann  
National Library  
of Ireland

# Finance

The Finance team is responsible for the day-to-day financial operations and statutory accounting. The team also looks after other corporate services including Procurement, FOI and risk management.

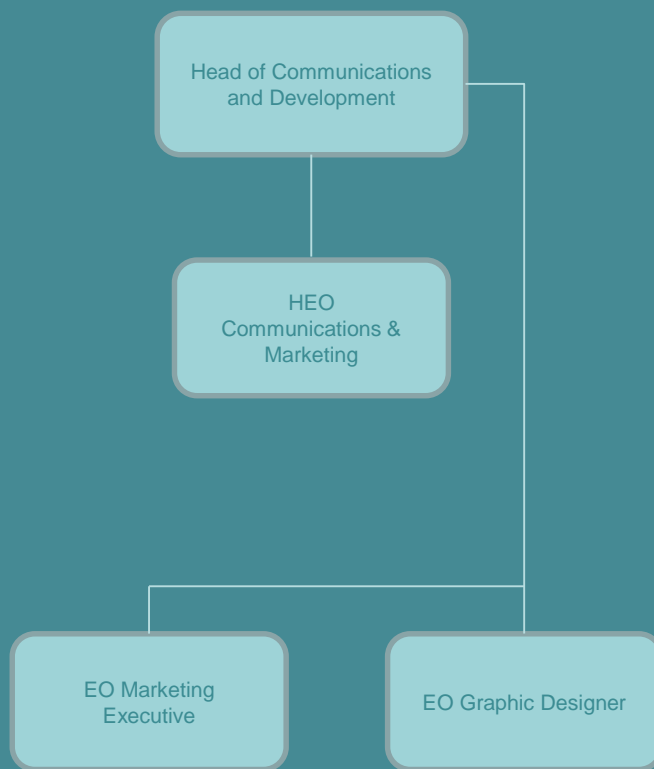




Leabharlann  
Náisiúnta  
na hÉireann  
National Library  
of Ireland

# Communications & Development

The Department of Communications & Development is responsible for fund raising; donor events; business opportunity development; relationship management; marketing and public relations; and NLI communications.



# Director's Office

The Director leads the NLI and manages the strategy, administration and functions of the Library with the oversight and governance of the NLI Board. The Director's Office includes the Secretary of the NLI Board, the Secretary to the Executive (Leadership Team) and aspects of corporate governance and administration.

